

TECHNICAL NOTE

THE USE OF GELATIN TO DRY CELLOPHANE WOUND SLAB GELS IN AN EMBROIDERING HOOP

Carlos Roberto Ceron¹, João Rodrigues dos Santos¹ and
Hermione Elly Melara de Campos Bicudo²

Polyacrilamide gel electrophoresis is a widespread technique in population genetics and other fields of study for which an effective separation of proteins is useful. Preservation of gels long after electrophoresis is frequently desirable. Several methods for drying polyacrilamide slab gels have been described. In Maizel's method (1971, in Studier, 1973) the gels are placed on a piece of Whatman 3 MM filter paper and dried under a vacuum in a boiling water bath. Simpler methods, which do not require special apparati, have been devised by Mayer (1976) and Popescu (1983). In the latter method, the gels are transferred to a plexiglass plate and covered with a 5% aqueous solution of gelatin spread evenly over the gel surface. The gels are then air dried for 24 hours or more at room temperature. Recently, a method for drying acrylamide slab gels using acrylic frames and cellophane has been described (Krishnan and Nguyen, 1990). An advantage of this method is the use of plastic wrap on one side of the gel, which prevents it from sticking to the cellophane, making fluorography of the dried gel possible.

Several methods for drying cylindrical acrilamide gels have also been described in the literature. For example, Aono *et al.* (1985) developed a method for drying SDS polyacrilamide disc gels at room temperature, using commercial slab gel drying equipment.

¹ Departamento de Química e Geociências and ² Departamento de Biologia, IBILCE-UNESP, Caixa Postal 136, 15055 São José do Rio Preto, SP, Brasil. Send correspondence to C.R.C.

This paper presents a procedure for drying slab gels in an embroidering hoop, using gelatin. This method has been used in our laboratory since 1987, for non-denaturing gels stained for esterase isoenzymes or stained for proteins after sodium dodecyl sulfate (SDS) electrophoresis (Ceron, 1988; Ceron and Santos, 1988). In this procedure, polyacrylamide slab gels are prepared as usual ($T = 5$ to 10% , $C = 2.6\%$). Electrophoresis is carried out on a vertical slab gel apparatus, at room temperature, using the discontinuous buffer system of Laemmli (1964), but omitting the stacking gel and SDS in the case of isozyme separation. The gels are stained for esterases following Zouros *et al.* (1982). After destaining, the gels are left at room temperature for one hour in a 7.5% acetic acid and 10% glycerol solution. Then, they are embedded in a 5% commercial gelatin solution and placed between two sheets of wet cellophane paper which are stretched out in an embroidering hoop. Two spring clips are adapted to the hoop to help fix the sheets. The hoop is left at room temperature for 24-48 hours. As the cellophane sheets dry, a smooth, transparent film is obtained which can be easily handled, photographed and stored for long periods without deterioration (Figure 1).

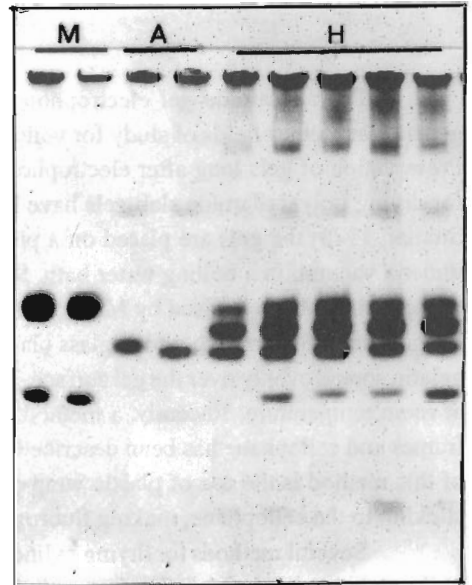


Figure 1 - Polyacrilamide gel, prepared and dried as described in the text, showing esterases of *Drosophila mulleri* (M), *D. arizonensis* (A) and their hybrids (H). The process preserves the quality of the gels.

ACKNOWLEDGMENTS

Thanks are due to Dr. James Coleman for improving the wording.

Publication supported by FAPESP.

REFERENCES

- Aono, S., Sato, H., Semba, R. and Kashiwamata, S. (1985). A simple method for drying of sodium dodecyl sulfate - polyacrilamide disc gels. *Electrophoresis* 6: 298-299.
- Ceron, C.R. (1988). Padrão de esterases no desenvolvimento de *Drosophila mulleri*, *Drosophila arizonensis* e seus híbridos. Doctoral Thesis, Instituto de Biociências, USP.
- Ceron, C.R. and Santos, J.R. (1988). A method for drying polyacrilamide slab gels. *Arq. Biol. Tecnol.* 31: 232.
- Krischnan, M. and Nguyen, H.T. (1990). Drying acrylamide slab gels for fluorography without using gel drier and vacuum pump. *Anal. Biochem.* 197: 51-53.
- Mayer, J.W. (1976). Simple and rapid methods for drying polyacrilamide gels after isoelectric focusing. *Anal. Biochem.* 76: 369-373.
- Laemmli, V.K. (1970). Cleavage of structural proteins during the assembly of the head of bacteriophage T4. *Nature* 227: 680-685.
- Popescu, O. (1983). A simple method for drying polyacrilamide slab gels using glycerol and gelatin. *electrophoresis* 4: 432-433.
- Studier, F.W. (1973). Analysis of bacteriophage T7 early RNAs and proteins on slab gels. *J. Mol. Biol.* 79: 237-248.
- Zouros, E., van Delden, W., Odense, R. and van Dijk, H. (1982). An esterase duplication in *Drosophila*: differences in expression of duplicate loci within and among related species. *Biochem. Genet.* 20: 929-942.

(Received February 14, 1991)